

## STANDBY 240 ekW CONTINUOUS 190 ekW

60 Hz

Caterpillar is leading the power generation marketplace with Power Solutions engineered to deliver unmatched flexibility, expandability, reliability, and cost-effectiveness.

### FEATURES

#### FULL RANGE OF ATTACHMENTS

- Wide range of bolt-on system expansion attachments, factory designed and tested

#### SINGLE-SOURCE SUPPLIER

- **Fully Prototype Tested** with certified torsional vibration analysis available

#### WORLDWIDE PRODUCT SUPPORT

- Worldwide parts availability through the Caterpillar dealer network
- With over 1,200 dealer outlets operating in 166 countries, you're never far from the Caterpillar part you need.
- 99.5% of parts orders filled within 48 hours. The best product support record in the industry.
- Caterpillar dealer service technicians are trained to service every aspect of your electric power generation system.
- Preventive maintenance agreements
- The Cat Scheduled Oil Sampling (S•O•S<sup>SM</sup>) program cost effectively detects internal engine component condition, even the presence of unwanted fluids and combustion by-products



#### CAT® G3406 TA GAS ENGINE

- Reliable, rugged, durable design
- Field-proven in thousands of applications worldwide
- Low pressure gas



#### CAT SR4B GENERATOR

- Designed to match performance and output characteristics of Caterpillar engines
- Optimum winding pitch for minimum total harmonic distortion and maximum efficiency
- Segregated AC/DC, low voltage accessory box provides single point access to accessory connections



#### CAT CONTROL PANELS

- Two levels of controls, designed to meet individual customer needs:
  - EMCP II provides digital monitoring, metering, and protection
  - EMCP II+ provides EMCP II features along with full-featured power metering and protective relaying



**TECHNICAL DATA**

Open Generator Set — 1800 rpm/60 Hz/480 Volts			Standby DM5439		Continuous DM5440	
<b>Package Performance</b>						
Power rating		ekW	240		190	
Power rating @ 0.8 PF		kVA	300		238	
Aftercooler temperature	Deg C	Deg F	54	130	54	130
<b>Fuel Consumption</b>						
100% load with fan	N•m³/hr	scf/hr	77	2894	64	2398
75% load with fan	N•m³/hr	scf/hr	61	2291	51	1912
50% load with fan	N•m³/hr	scf/hr	45	1682	37	1418
<b>Cooling System</b>						
Ambient air temperature*	Deg C	Deg F	40	105	40	105
Air flow restriction (system)	kPa	in water	0.12	0.5	0.12	0.5
Air flow (maximum @ rated speed for standard radiator arrangement)	m³/min	cfm	679	23,983	836	29,524
Engine coolant capacity with radiator	L	Gal	57	15	57	15
Jacket water outlet temperature	Deg C	Deg F	99	210	99	210
<b>Exhaust System</b>						
Combustion air inlet flow rate	N•m³/min	scfm	16	572	12	466
Exhaust gas stack temperature	Deg C	Deg F	536	997	525	977
Exhaust gas flow rate	N•m³/min	cfm	16	1749	13	1424
Exhaust flange size (internal diameter)	mm	in	127	5	127	5
Exhaust system backpressure (maximum allowable)	kPa	in water	6.7	27	6.7	27
<b>Heat Rejection</b>						
Low Heat Value (LHV) fuel input	kW	Btu/min	780	44,358	647	36,767
Heat rejection to jacket water (includes oil cooler)	kW	Btu/min	234	13,305	210	11,946
Total heat rejection to exhaust (LHV to 25° C)	kW	Btu/min	217	12,319	174	9892
Heat rejection to exhaust (LHV to 120° C)	kW	Btu/min	167	8180	132	6460
Heat rejection to A/C	kW	Btu/min	25	1395	12	694
Heat rejection to atmosphere from engine	kW	Btu/min	31	1774	26	1471
Heat rejection to atmosphere from generator	kW	Btu/min	20	1162	16	897
<b>Generator</b>						
Motor starting capability @ 30% voltage dip**		kVA	649		649	
Frame			447		447	
Temperature rise		Deg C	130		105	
<b>Emissions***</b>						
NOx		g/bhp-hr	17.8		19.7	
CO		g/bhp-hr	1.1		1	
HC (total)		g/bhp-hr	3.9		4.2	
HC (non-methane)		g/bhp-hr	0.59		0.63	
Exhaust O <sub>2</sub> (dry)		%	4.0		4.0	

\*Ambient capability at 200 m (660 ft) above sea level. For ambient capability at other altitudes, consult your Caterpillar dealer.

\*\*Assumes synchronous driver

\*\*\*Emissions data measurement is consistent with those described in EPA CFR 40 PART 89 SUBPART D and ISO 8178-1 for measuring HC, CO, CO<sub>2</sub> and NOx. Data shown is based on steady state engine operating conditions of 77° F, 28.43 inches HG and fuel having a LHV of 920 BTU per cubic foot at 30.00 inches HG absolute and 32° F. Not to exceed emission data shown is subject to instrumentation, measurement, facility and engine fuel system adjustments.

**RATING DEFINITIONS AND CONDITIONS**

**Standby** — Output available with varying load for the duration of the interruption of the normal source power.

**Continuous** — Output available without varying load for an unlimited time.

**Ratings** are based on ISO3046/1 standard reference conditions of 25° C (77° F) and 100 kPa (29.61 in Hg).

**Ratings** are based on pipeline natural gas having a LHV (low heat value) of 36.2 mJ/N•m³ (920 Btu/cu ft). Variations in altitude, temperature, and gas composition from standard conditions or the use of a three way catalyst may require a reduction in engine horsepower.

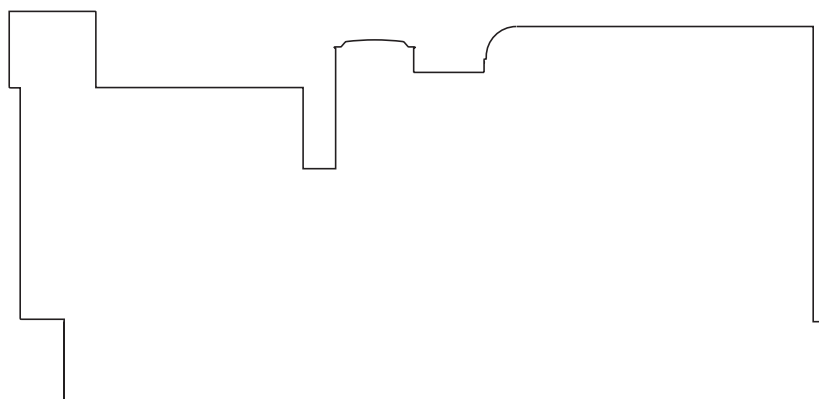
**S T A N D B Y**      2 4 0 e k W  
**C O N T I N U O U S**      1 9 0 e k W  
**6 0 H z**



**STANDBY/CONTINUOUS POWER GENERATOR SET PACKAGE — TOP VIEW**



**STANDBY/CONTINUOUS POWER GENERATOR SET PACKAGE — SIDE VIEW**



Package Dimensions		
<b>Length</b>	4074 mm	160.39 in
<b>Width</b>	1398.4 mm	55.05 in
<b>Height</b>	2138.6 mm	84.20 in
<b>Shipping Weight</b>	4318 kg	9500 lb

Note: Do not use for installation design.  
See general dimension drawings  
for detail (Drawing #207-4501).

[www.CAT-ElectricPower.com](http://www.CAT-ElectricPower.com)

TMI Reference No.: DM5439, DM5440

U.S. sourced

LEHE1430-02 (03-02)

© 2001 Caterpillar  
All rights reserved.  
Printed in U.S.A.

Materials and specifications are subject to change without notice.  
The International System of Units (SI) is used in this publication.

# ORDER INVOICE WITH ENGINEERING BREAKDOWN [CTS00375]

SEPTEMBER 10, 2024

(CTS00375)-ENGINE (CBP00288)-GENERATOR (KAR00293)-GENSET

For Help Desk Phone Numbers [Click here](#)

### Caution Ordering Parts from TMI Order Invoice with Engineering Breakdown

Order Invoice with Engineering Breakdown information is provided by the orders system, once you click breakdown of a part, TMI pulls the information from the Engineering Data System (EDS).

EDS is not a manufacturing bill of material system but a engineering part in effect system. TMI uses the built date and calls EDS to pull the part in effect at that time.

Recently, TMI added an as manufactured tab. This tab provides the consist as reported from the engine factory. This data is limited but growing for new manufactured engines.To see an example enter "AT400559"

As-Manufactured tab is refreshed with correct data. The history records as well as the current data with wrong details are deleted. From 28th march 2019, TMI is maintaining only current data which possesses correct details.

To validate you are ordering a correct part, TMI encourages you to contact Morton Parts. 800-566-7782 or <https://pscrmwebforms.cat.com/GDSNquickentry.aspx>

The below option will email full breakdown of the serial number

Excel  PDF

FullBreakDown

Sales Model: 3406 GAS Invoice Number:GE 516421 Dealer: D490 S.O. Number: BDBSS00 Invoice Date: 2004-05-13

[Feature Code](#)


[Part Numbers](#)

[Ship Loose](#)


[Help](#)

## Feature Codes [Top](#)

24 results found, displaying 1 to 24



Reference Number	Eng Chg	Quantity	ASM	LESS 	Set Type	Reference Drawing	Description
<a href="#">406GE04</a>	F	1	I			<a href="#">Drawing...</a>	G3406 TA 250 EKW 60HZ PGS 02
<a href="#">EMCCPRH</a>	F	1	I			<a href="#">Drawing...</a>	CONTROL PANEL MOUNTING - RH
<a href="#">EMCENGU</a>	F	1	I				ENGLISH DISPLAY UNITS 01
<a href="#">CT04005</a>	F	1	I			<a href="#">Drawing...</a>	CURRENT TRANSF., 400:5 RATIO
<a href="#">EMCAM06</a>	F	1	I			<a href="#">Drawing...</a>	ALARM MODULE - NFPA 99
<a href="#">EMCRMP5</a>	F	1	I			<a href="#">Drawing...</a>	CUST. REM. ANNUN. MOD-NFPA 110
<a href="#">COLHTR4</a>	F	1	I			<a href="#">Drawing...</a>	JACKETWATER HEATER
<a href="#">PTSREM1</a>	F	1	I				REMOVAL AR-POWER TERM. STRIP
<a href="#">CBK0150</a>	F	1	I			<a href="#">Drawing...</a>	300AMP 3-POLE CIRCUIT BRKR 07
<a href="#">CBRH002</a>	F	1	I			<a href="#">Drawing...</a>	CIRCUIT BREAKER - RH 03
<a href="#">CBK0058</a>	F	1	I			<a href="#">Drawing...</a>	SECOND CIRCUIT BREAKER
<a href="#">CBLH003</a>	F	1	I			<a href="#">Drawing...</a>	CIRCUIT BREAKER - LH 04
<a href="#">CBK0070</a>	F	1	I			<a href="#">Drawing...</a>	100AMP 3-POLE CIRCUIT BRKR 02
<a href="#">BTC1015</a>	F	1	I			<a href="#">Drawing...</a>	BAT CGR -10 AMP DUAL RATE 02
<a href="#">CNTCT01</a>	F	1	I				CONTACTOR GP
<a href="#">EMCPTWO</a>	F	1	I			<a href="#">Drawing...</a>	ELECTRONIC MODULAR CONTROL PNL

24 results found, displaying 1 to 24

Reference Number	Eng Chg	Quantity	ASM	LESS 	Set Type	Reference Drawing	Description
<a href="#">60H0480</a>	F	1	I			<a href="#">Drawing...</a>	60HZ 480 VOLTS
<a href="#">MSEPGGN</a>	F	1	I				GENERAL EPG
<a href="#">LITPAPR</a>	F	2	I				EXTRA ENG LIT - PAPER (1 - 6)
<a href="#">MSCEC77</a>	F	1	I				PUBLIC OR CIVIL SERVICES
<a href="#">MWCODEF</a>	F	1	I				STANDBY POWER
<a href="#">STANDBY</a>	F	1	I				STANDBY POWER APPLICATION 02
<a href="#">KW00240</a>	F	1	I				240 EKW W/FAN
<a href="#">LANENGO</a>	F	1	I				ENGLISH LANGUAGE OPTION

## Part Numbers [Top](#)

141 results found, displaying 1 to 141

Reference Number	Eng Chg	Quantity	ASM	LESS 	Set Type	Description	BreakDown...	Reference Drawing	SIS Part Diagram 
LE4007	20	1	I			G3406 STANDBY/CONTIN	<a href="#">BreakDown...</a>	<a href="#">Drawing...</a>	<a href="#">View Diagram</a>
406GE04	F	1	I			G3406 TA 250 EKW 60HZ PGS 02	<a href="#">BreakDown...</a>		<a href="#">View Diagram</a>
3L0432		1	I			*TEST - PKG GEN SET (EMCP II)*	<a href="#">BreakDown...</a>		<a href="#">View Diagram</a>
3N8594	05	1	I			COVER GP-ENG/GEN LIFT EYE	<a href="#">BreakDown...</a>		<a href="#">View Diagram</a>
4N0691	20	1	I			MANIFOLD GP-WATER COOLED EXH.	<a href="#">BreakDown...</a>		<a href="#">View Diagram</a>
4N1062	11	1	I			ELECTRIC STARTING MOTOR LH 24V	<a href="#">BreakDown...</a>	<a href="#">Drawing...</a>	<a href="#">View Diagram</a>
4P9313	01	1	I			LINES GP - WATER	<a href="#">BreakDown...</a>		<a href="#">View Diagram</a>
6I0280	07	1	I			BYPASS GP - EXHAUST	<a href="#">BreakDown...</a>		<a href="#">View Diagram</a>
7C1052	03	1	I			DRIVE GP - ACCESSORY	<a href="#">BreakDown...</a>		<a href="#">View Diagram</a>
7C6133	03	1	I			LINES GP - TURBO OIL	<a href="#">BreakDown...</a>		<a href="#">View Diagram</a>
7C9706	06	1	I			AFTERCOOLER GP	<a href="#">BreakDown...</a>		<a href="#">View Diagram</a>
7C9731	03	1	I			MOUNTING GP - AIR CLEANER	<a href="#">BreakDown...</a>		<a href="#">View Diagram</a>
7C9733	05	1	I			COVER GP - STORAGE	<a href="#">BreakDown...</a>		<a href="#">View Diagram</a>
7L7871	09	1	I			24 VOLT BATTERY SET - DRY	<a href="#">BreakDown...</a>		<a href="#">View Diagram</a>
7N8970	04	1	I			FAN DRIVE 0.571 RATIO	<a href="#">BreakDown...</a>		<a href="#">View Diagram</a>
7X2425	02	1	I			OIL-BULK-1 LITER: DO NOT DRAIN	<a href="#">BreakDown...</a>		<a href="#">View Diagram</a>
9Y3052	03	1	I			REGULATOR GP	<a href="#">BreakDown...</a>		<a href="#">View Diagram</a>
9Y3363	01	1	I			LINES GP - AIR	<a href="#">BreakDown...</a>		<a href="#">View Diagram</a>
9Y9809	02	1	I			TURBOCHARGER GP	<a href="#">BreakDown...</a>		<a href="#">View Diagram</a>
9Y9812	03	1	I			CARBURETOR GP-LOW PR GAS	<a href="#">BreakDown...</a>		<a href="#">View Diagram</a>
9Y9840	02	1	I			CONVERSION GP - GOVERNOR	<a href="#">BreakDown...</a>		<a href="#">View Diagram</a>
1213890	03	1	I			CONTROL GP-B	<a href="#">BreakDown...</a>		<a href="#">View Diagram</a>
1413204	00	1	I			ACTUATOR GP	<a href="#">BreakDown...</a>		<a href="#">View Diagram</a>
1435866	01	1	I			FASTENER GP.	<a href="#">BreakDown...</a>		<a href="#">View Diagram</a>
1439517	07	1	I			REGULATOR GP - VOLTAGE	<a href="#">BreakDown...</a>		<a href="#">View Diagram</a>
1461860	01	1	I			SWITCH GROUP	<a href="#">BreakDown...</a>		<a href="#">View Diagram</a>
1466771	01	1	I			PUMP GROUP-AUX	<a href="#">BreakDown...</a>		<a href="#">View Diagram</a>
1466784	00	1	I			LINES GROUP-WATER	<a href="#">BreakDown...</a>		<a href="#">View Diagram</a>
1694450	04	1	I			HARNESS ASSEMBLY-WIRING AC	<a href="#">BreakDown...</a>		<a href="#">View Diagram</a>
1708400	04	1	I			COVER GP	<a href="#">BreakDown...</a>		<a href="#">View Diagram</a>
1919374	01	1	I			DRIVE GP - GOV	<a href="#">BreakDown...</a>		<a href="#">View Diagram</a>
1930988	00	1	I			WIRING GROUP	<a href="#">BreakDown...</a>		<a href="#">View Diagram</a>
1930998	02	1	I			INGITION GROUP	<a href="#">BreakDown...</a>		<a href="#">View Diagram</a>
1938725	00	1	I			GENERATOR AR. SR4B-447-SE	<a href="#">BreakDown...</a>		<a href="#">View Diagram</a>
1955008	01	1	I			WIRING GP. ELECTRIC START	<a href="#">BreakDown...</a>		<a href="#">View Diagram</a>
1962948	03	1	I			ENCLOSURE GP	<a href="#">BreakDown...</a>		<a href="#">View Diagram</a>
1989810	10	1	I			BOX GP-EXTENSION	<a href="#">BreakDown...</a>		<a href="#">View Diagram</a>
2029936	02	1	I			ENGINE ARRGT. G3406 TA	<a href="#">BreakDown...</a>		<a href="#">View Diagram</a>
2042515	01	1	I			WIRING GP	<a href="#">BreakDown...</a>		<a href="#">View Diagram</a>
2046818	02	1	I			PANEL GROUP - ELECTRONIC	<a href="#">BreakDown...</a>		<a href="#">View Diagram</a>
2050998	00	1	I			GENERAL ARRGT.	<a href="#">BreakDown...</a>		<a href="#">View Diagram</a>
2054110	03	1	I			CONTROL GP. GOVERNOR	<a href="#">BreakDown...</a>		<a href="#">View Diagram</a>
2057786	01	1	I			RADIATOR GP. 15 SQ FT(60/40)	<a href="#">BreakDown...</a>		<a href="#">View Diagram</a>

141 results found, displaying 1 to 141

Reference Number	Eng Chg	Quantity	ASM	LESS	Set Type	Description	BreakDown...	Reference Drawing	SIS Part Diagram
2066067	02	1	I			GUARD GP. - PULLEY	<a href="#">BreakDown...</a>		<a href="#">View Diagram</a>
2080948	02	1	I			SENSOR GP - COOLANT LEVEL	<a href="#">BreakDown...</a>		<a href="#">View Diagram</a>
2085385	00	1	I			MOUNTING GROUP CONT	<a href="#">BreakDown...</a>		<a href="#">View Diagram</a>
7W1340	08	1	I			MOUNTING GP - ALTERNATOR	<a href="#">BreakDown...</a>		<a href="#">View Diagram</a>
5N5692	12	1	I			ALTERNATOR - 24V - 45 AMP	<a href="#">BreakDown...</a>	<a href="#">Drawing...</a>	<a href="#">View Diagram</a>
2065551	01	1	I			WIRING GP.	<a href="#">BreakDown...</a>		<a href="#">View Diagram</a>
2087865	01	1	I			FILN GROUP	<a href="#">BreakDown...</a>		<a href="#">View Diagram</a>
2114683	00	1	I			LINES GROUP-DRAIN(COOLANT)(15)	<a href="#">BreakDown...</a>		<a href="#">View Diagram</a>
3L0436		1	I			ENGINE TEST	<a href="#">BreakDown...</a>		<a href="#">View Diagram</a>
3L0462		1	I			TEST- GAS GENSET	<a href="#">BreakDown...</a>		<a href="#">View Diagram</a>
2W7846	02	1	I			FLEXIBLE FITTING	<a href="#">BreakDown...</a>	<a href="#">Drawing...</a>	<a href="#">View Diagram</a>
2281042	00	1	I			CAP GROUP-AIR CLEANER	<a href="#">BreakDown...</a>		<a href="#">View Diagram</a>
5P2506	00	1	I			LITERATURE - ENGLISH	<a href="#">BreakDown...</a>	<a href="#">Drawing...</a>	<a href="#">View Diagram</a>
2057860	03	1	I			MOUNTING GP - 17 DIGIT PIN	<a href="#">BreakDown...</a>		<a href="#">View Diagram</a>
2145820	03	1	I			BASE GROUP	<a href="#">BreakDown...</a>		<a href="#">View Diagram</a>
2151264	00	1	I			SUPPORT GROUP-BATTERY	<a href="#">BreakDown...</a>		<a href="#">View Diagram</a>
2233484	01	1	I			WIRING GP - ALT.	<a href="#">BreakDown...</a>		<a href="#">View Diagram</a>
2121453	00	1	I			VALVE GP-SOL(GSOV)	<a href="#">BreakDown...</a>		<a href="#">View Diagram</a>
3E9439	00	1	I			ANTIFREEZE	<a href="#">BreakDown...</a>		<a href="#">View Diagram</a>
2295572	01	1	I			CLEANER GP-AIR	<a href="#">BreakDown...</a>		<a href="#">View Diagram</a>
2374144	00	1	I			LINES GP-DRAIN	<a href="#">BreakDown...</a>		<a href="#">View Diagram</a>
2173461	00	1	I			DISPOSAL GP FUMES	<a href="#">BreakDown...</a>		<a href="#">View Diagram</a>
1457273	01	1	I			LINES GP - DRAIN	<a href="#">BreakDown...</a>		<a href="#">View Diagram</a>
LE4118	01	1	I			MOUNTING GP- CONTROL PANEL (RH)	<a href="#">BreakDown...</a>	<a href="#">Drawing...</a>	<a href="#">View Diagram</a>
EMCCPRH	F	1	I			CONTROL PANEL MOUNTING - RH	<a href="#">BreakDown...</a>		<a href="#">View Diagram</a>
1898892	01	1	I			CABLE GP - ELEC	<a href="#">BreakDown...</a>		<a href="#">View Diagram</a>
1989311	00	1	I			MOUNTING GP - CONTROL	<a href="#">BreakDown...</a>		<a href="#">View Diagram</a>
2037164	01	1	I			CONNECTION GP	<a href="#">BreakDown...</a>		<a href="#">View Diagram</a>
CA0846	07	1	I			ENGLISH DISPLAY UNITS 01	<a href="#">BreakDown...</a>		<a href="#">View Diagram</a>
EMCENGU	F	1	I			ENGLISH DISPLAY UNITS 01	<a href="#">BreakDown...</a>		<a href="#">View Diagram</a>
1214713	00	1	I			ENGLISH DISPLAY UNITS	<a href="#">BreakDown...</a>		<a href="#">View Diagram</a>
LE6524	00	1	I			TRANSFORMER GP (400:5) FOR	<a href="#">BreakDown...</a>	<a href="#">Drawing...</a>	<a href="#">View Diagram</a>
CT04005	F	1	I			CURRENT TRANSF., 400:5 RATIO	<a href="#">BreakDown...</a>		<a href="#">View Diagram</a>
2301350	00	1	I			TRANSFORMER GROUP (400:5)	<a href="#">BreakDown...</a>		<a href="#">View Diagram</a>
CA1436	03	1	I			ALARM MODULE - NFPA 99	<a href="#">BreakDown...</a>	<a href="#">Drawing...</a>	<a href="#">View Diagram</a>
EMCAM06	F	1	I			ALARM MODULE - NFPA 99	<a href="#">BreakDown...</a>		<a href="#">View Diagram</a>
1716827	04	1	I			CONTROL GP	<a href="#">BreakDown...</a>		<a href="#">View Diagram</a>
LE0311	01	1	I			REMOTE ANNUNCIATOR MODULE	<a href="#">BreakDown...</a>	<a href="#">Drawing...</a>	<a href="#">View Diagram</a>
EMCRMP5	F	1	I			CUST. REM. ANNUN. MOD-NFPA 110	<a href="#">BreakDown...</a>		<a href="#">View Diagram</a>
1311965	02	1	I			CUSTOM REM. ANNUNCIATOR MODULE	<a href="#">BreakDown...</a>		<a href="#">View Diagram</a>
LE4100	03	1	I			JACKET WATER HEATER GROUP	<a href="#">BreakDown...</a>	<a href="#">Drawing...</a>	<a href="#">View Diagram</a>
COLHTR4	F	1	I			JACKETWATER HEATER	<a href="#">BreakDown...</a>		<a href="#">View Diagram</a>
2035888	01	1	I			CONNECTION GP	<a href="#">BreakDown...</a>		<a href="#">View Diagram</a>
2145833	02	1	I			MOUNTING GP. JACKET WATER HTR	<a href="#">BreakDown...</a>		<a href="#">View Diagram</a>
CA2465	02	1	I			REMOVAL AR-1200 AMPS PTS	<a href="#">BreakDown...</a>		<a href="#">View Diagram</a>
PTSREM1	F	1	I			REMOVAL AR-POWER TERM. STRIP	<a href="#">BreakDown...</a>		<a href="#">View Diagram</a>
LE4134	01	1	I			CIRCUIT BREAKER W/ ST 300 AMP	<a href="#">BreakDown...</a>	<a href="#">Drawing...</a>	<a href="#">View Diagram</a>
CBK0150	F	1	I			300AMP 3-POLE CIRCUIT BRKR 07	<a href="#">BreakDown...</a>		<a href="#">View Diagram</a>
5N9688		1	I			NOTE-CIRCUIT BREAKER TRIP-300A	<a href="#">BreakDown...</a>		<a href="#">View Diagram</a>
1708333	06	1	I			MOUNTING GP.-BREAKER	<a href="#">BreakDown...</a>		<a href="#">View Diagram</a>
1832484	01	1	I			BREAKER GP.-CIRCUIT	<a href="#">BreakDown...</a>		<a href="#">View Diagram</a>
2126203	02	1	I			COVER GROUP	<a href="#">BreakDown...</a>		<a href="#">View Diagram</a>
2222331	00	1	I			WIRING GROUP	<a href="#">BreakDown...</a>		<a href="#">View Diagram</a>
CA2479	02	1	I			CIRCUIT BREAKER - RH 03	<a href="#">BreakDown...</a>	<a href="#">Drawing...</a>	<a href="#">View Diagram</a>
CBRH002	F	1	I			CIRCUIT BREAKER - RH 03	<a href="#">BreakDown...</a>		<a href="#">View Diagram</a>
5N9696		1	I			NOTE - BOTTOM CABLE ENTRY	<a href="#">BreakDown...</a>		<a href="#">View Diagram</a>
5N9698		1	I			NOTE- SINGLE BREAKER RIGHT	<a href="#">BreakDown...</a>		<a href="#">View Diagram</a>
CA2394	02	1	I			BREAKER GP-CIRCUIT-250 AMP-UL	<a href="#">BreakDown...</a>	<a href="#">Drawing...</a>	<a href="#">View Diagram</a>



141 results found, displaying 1 to 141

Reference Number	Eng Chg	Quantity	ASM	LESS	Set Type	Description	BreakDown...	Reference Drawing	SIS Part Diagram
CBK0058	F	1	I			SECOND CIRCUIT BREAKER	<a href="#">BreakDown...</a>		<a href="#">View Diagram</a>
1708331	05	1	I			MOUNTING GRP. BREAKER	<a href="#">BreakDown...</a>		<a href="#">View Diagram</a>
1832481	01	1	I			BREAKER GP.-CIRCUIT	<a href="#">BreakDown...</a>		<a href="#">View Diagram</a>
1832518	03	1	I			CABLE GP	<a href="#">BreakDown...</a>		<a href="#">View Diagram</a>
1847038	01	1	I			WIRING GP. CIRCUIT BREAKER	<a href="#">BreakDown...</a>		<a href="#">View Diagram</a>
CA2482	04	1	I			BOX GP-CIRCUIT BREAKER-LH	<a href="#">BreakDown...</a>	<a href="#">Drawing...</a>	<a href="#">View Diagram</a>
CBLH003	F	1	I			CIRCUIT BREAKER - LH 04	<a href="#">BreakDown...</a>		<a href="#">View Diagram</a>
5N9701		1	I			NOTE- SEC/THIRD BREAKER LEFT	<a href="#">BreakDown...</a>		<a href="#">View Diagram</a>
1979556	02	1	I			BOX GP-EXTENSION	<a href="#">BreakDown...</a>		<a href="#">View Diagram</a>
2255406	00	1	I			COVER GROUP	<a href="#">BreakDown...</a>		<a href="#">View Diagram</a>
CA2424	02	1	I			BREAKER GP-CIRCUIT-100 AMP-UL	<a href="#">BreakDown...</a>	<a href="#">Drawing...</a>	<a href="#">View Diagram</a>
CBK0070	F	1	I			100AMP 3-POLE CIRCUIT BRKR 02	<a href="#">BreakDown...</a>		<a href="#">View Diagram</a>
1708329	01	1	I			BREAKER GP.-CIRCUIT	<a href="#">BreakDown...</a>		<a href="#">View Diagram</a>
1832522	02	1	I			CABLE GP.	<a href="#">BreakDown...</a>		<a href="#">View Diagram</a>
1979511	00	1	I			COVER GP	<a href="#">BreakDown...</a>		<a href="#">View Diagram</a>
LE4113	01	1	I			BATTERY CHARGER- 10 AMP UL W/ A	<a href="#">BreakDown...</a>	<a href="#">Drawing...</a>	<a href="#">View Diagram</a>
BTC1015	F	1	I			BAT CGR -10 AMP DUAL RATE 02	<a href="#">BreakDown...</a>		<a href="#">View Diagram</a>
1116138	03	1	I			BATTERY CHARGER 10 AMP	<a href="#">BreakDown...</a>		<a href="#">View Diagram</a>
2173036	00	1	I			MOUNTING GP-CHARGER	<a href="#">BreakDown...</a>		<a href="#">View Diagram</a>
2184368	00	1	I			CONENCTION GP-G	<a href="#">BreakDown...</a>		<a href="#">View Diagram</a>
LE4141	00	1	I			CONTACTOR GP	<a href="#">BreakDown...</a>		<a href="#">View Diagram</a>
CNTCT01	F	1	I			CONTACTOR GP	<a href="#">BreakDown...</a>		<a href="#">View Diagram</a>
1847031	03	1	I			CONTACTOR GP	<a href="#">BreakDown...</a>		<a href="#">View Diagram</a>
EMCPTWO	F	1	I			ELECTRONIC MODULAR CONTROL PNL	<a href="#">BreakDown...</a>		<a href="#">View Diagram</a>
5N9597		1	I			VOLTAGE INDICATOR 480V, 60HZ	<a href="#">BreakDown...</a>		<a href="#">View Diagram</a>
60H0480	F	1	I			60HZ 480 VOLTS	<a href="#">BreakDown...</a>		<a href="#">View Diagram</a>
0V1065		1	I			GENERAL EPG	<a href="#">BreakDown...</a>		<a href="#">View Diagram</a>
MSEPGGN	F	1	I			GENERAL EPG	<a href="#">BreakDown...</a>		<a href="#">View Diagram</a>
0V1672		2	I			EXTRA ENG LIT - PAPER (1 - 6)	<a href="#">BreakDown...</a>		<a href="#">View Diagram</a>
LITPAPR	F	2	I			EXTRA ENG LIT - PAPER (1 - 6)	<a href="#">BreakDown...</a>		<a href="#">View Diagram</a>
MSCEC77	F	1	I			PUBLIC OR CIVIL SERVICES	<a href="#">BreakDown...</a>		<a href="#">View Diagram</a>
MWCODEF	F	1	I			STANDBY POWER	<a href="#">BreakDown...</a>		<a href="#">View Diagram</a>
9Y8156	05	1	I			STANDBY POWER APPLICATION 02	<a href="#">BreakDown...</a>		<a href="#">View Diagram</a>
STANDBY	F	1	I			STANDBY POWER APPLICATION 02	<a href="#">BreakDown...</a>		<a href="#">View Diagram</a>
GG5124	06	1	I			278 BKW 240 GEN KW W/F 60 HZ	<a href="#">BreakDown...</a>		<a href="#">View Diagram</a>
KW00240	F	1	I			240 EKW W/FAN	<a href="#">BreakDown...</a>		<a href="#">View Diagram</a>
0K3399		1	I			278 BKW (373 BHP) @ 1800 RPM	<a href="#">BreakDown...</a>		<a href="#">View Diagram</a>
CA0866	07	1	I			LANGUAGE MARKINGS-ENGLISH	<a href="#">BreakDown...</a>		<a href="#">View Diagram</a>
LANENGO	F	1	I			ENGLISH LANGUAGE OPTION	<a href="#">BreakDown...</a>		<a href="#">View Diagram</a>
0P8910		1	I			POST SALE SPAR	<a href="#">BreakDown...</a>		<a href="#">View Diagram</a>

## Ship Loose [Top](#)

5 results found, displaying 1 to 5

Reference Number	Eng Chg	Quantity	ASM	LESS	Set Type	Description	BreakDown...
		1	S			FOR GRIF ASSEMBL	<a href="#">BreakDown...</a>
1636164		1	S			CONT GP -E	<a href="#">BreakDown...</a>
2502149		6	S			WIRE AS	<a href="#">BreakDown...</a>
ESO		1	S			(PRNT ESO COPY)	<a href="#">BreakDown...</a>
PML		1	S			*REQUIRED DECALS	<a href="#">BreakDown...</a>



Content Owner: Commercial Processes Division

Web Master(s): [PSG Web Based Systems Support](#)

Current Date: 9/10/2024, 2:37:20 PM

© Caterpillar Inc. 2024 All Rights Reserved.

[Data Privacy Statement.](#)

[Cookie Settings](#)